

2015-16 Budget Proposal





Enfield Public Schools

Vision: A world class school system

Mission: Striving to inspire and develop each individual's gifts and talents

Spirit: Committed to life-long learning

O u r P r o m i s e s

We Believe.

We are dedicated to the growth and development of every student.



We Nurture.

We partner with families to support and challenge each child.



We Collaborate.

We learn and grow together.



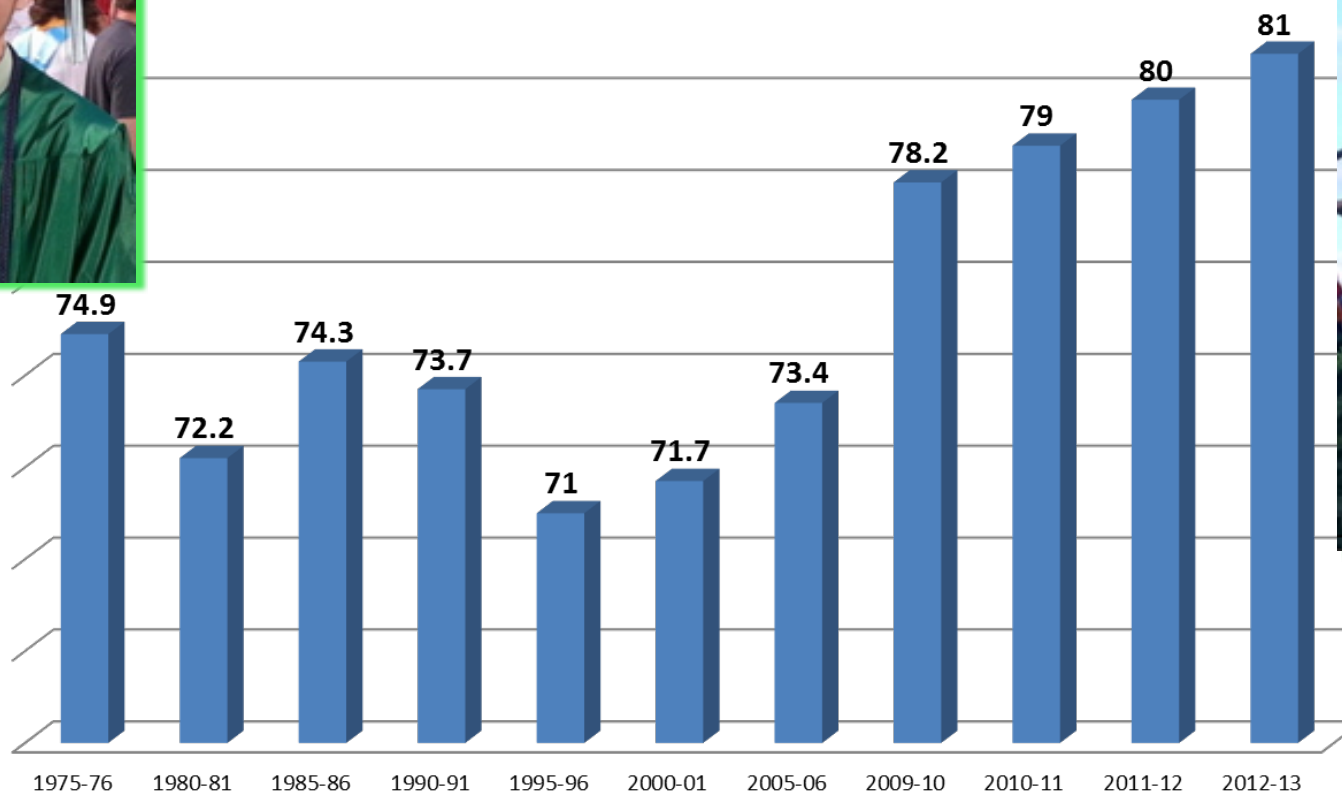
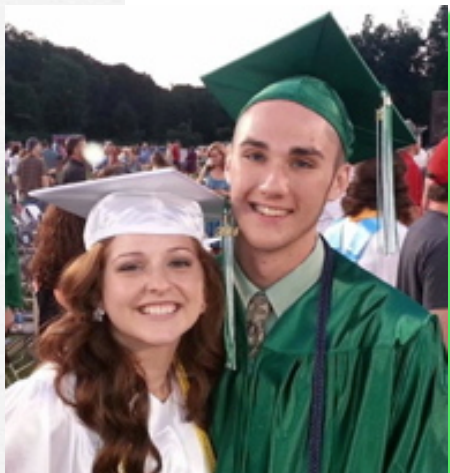
We Aspire.

We are committed to continuous improvement.

Our Values

- Excellence
- Creativity
- Pride
- Integrity
- Resilience
- Kindness

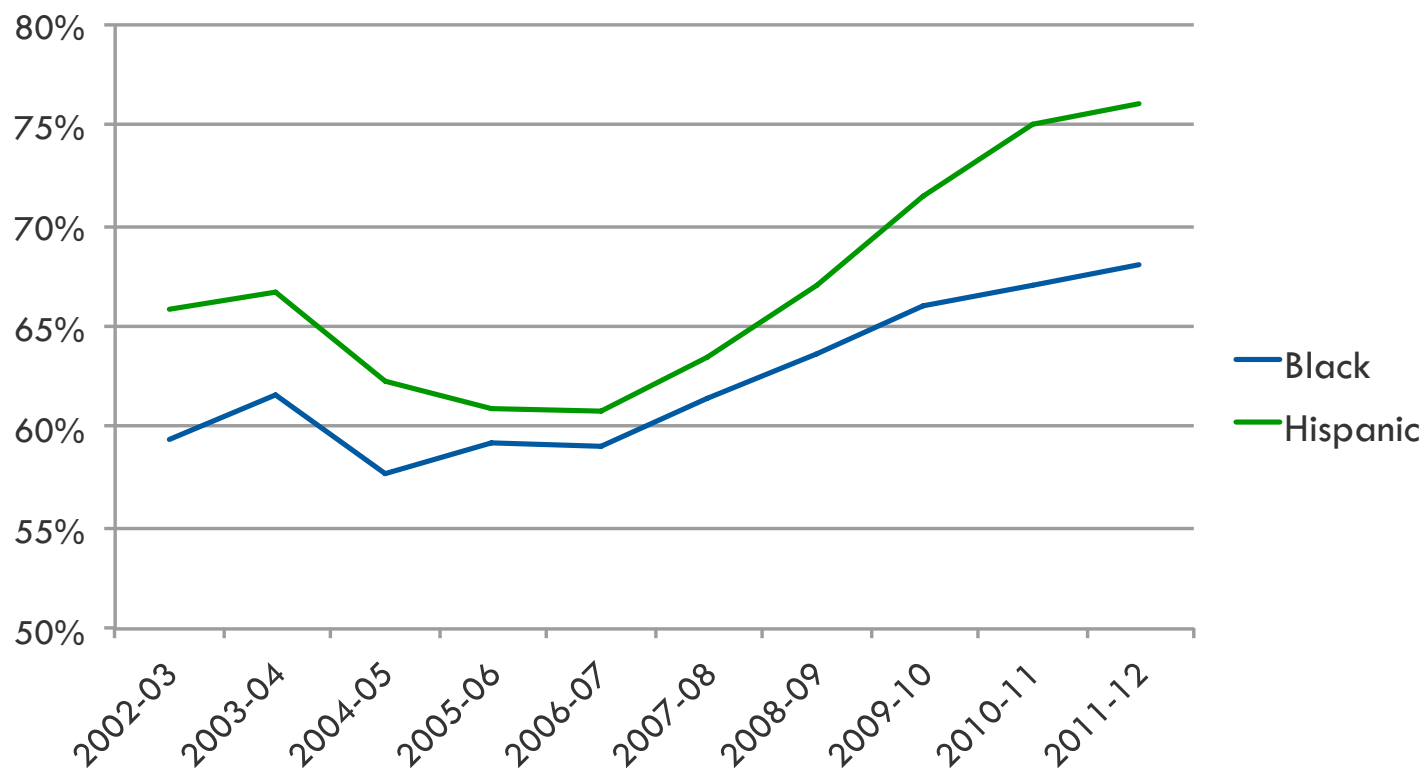
High School Graduation Rate at Record High



Sources: For 1975-76 to 2009-10: U.S. Department of Education, National Center for Education Statistics, Common Core of Data (CCD), *State Dropout and Completion File*, 2009-10. <http://nces.ed.gov/pubsearch/pubsinfo.asp?pubid=2013309rev>
For 2010-11 to 2012-13: CCD *Public high school 4-year adjusted cohort graduation rate (ACGR)*
http://nces.ed.gov/ccd/tables/ACGR_2010-11_to_2012-13.asp

More Hispanic and African-American Students Graduating

High school graduation rates: School years 2002-2003 through 2011-2012



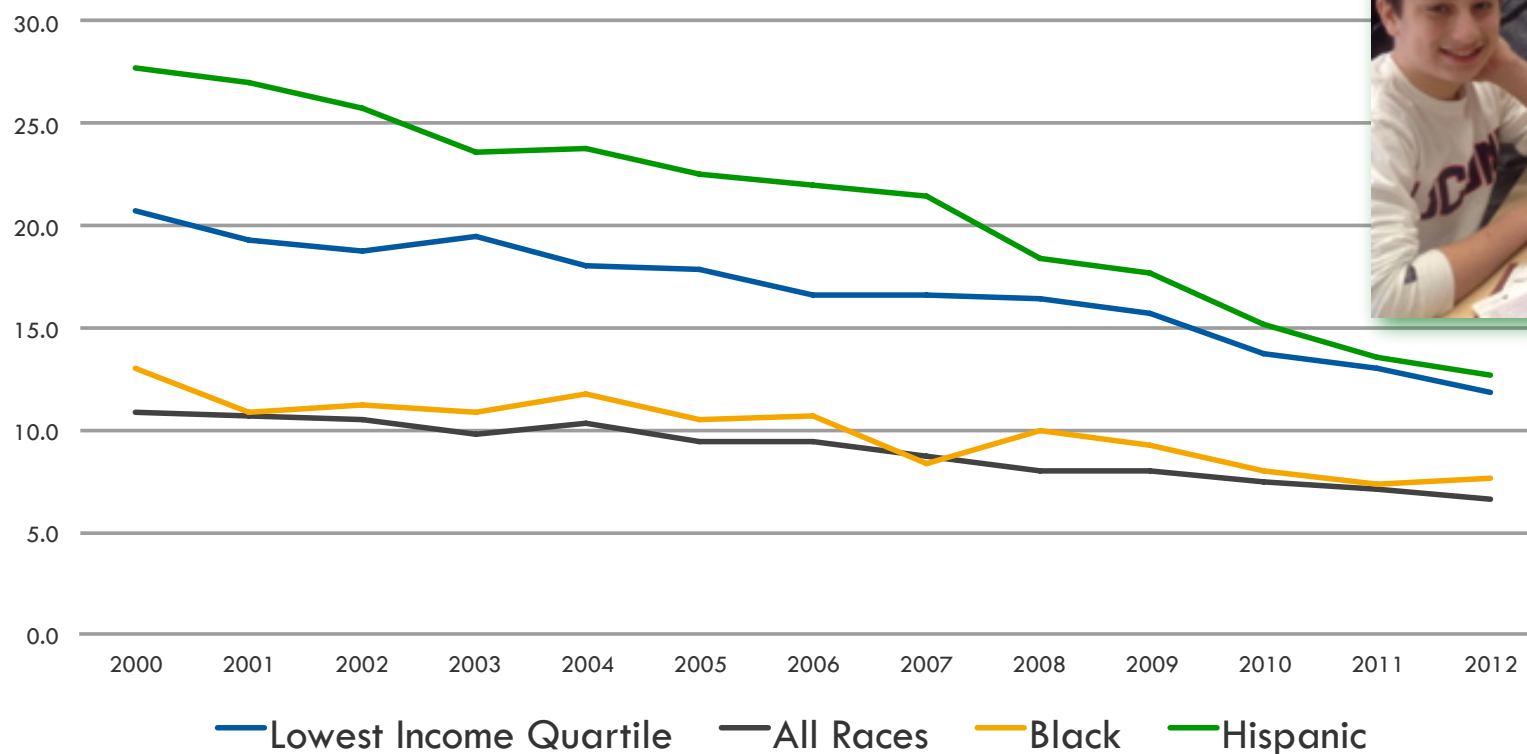
SOURCE: U.S. Department of Education, National Center for Education Statistics, Common Core of Data (CCD), "NCES Common Core of Data State Dropout and Graduation Rate Data file," School Year 2011-12, Preliminary Version 1a; School Year 2010-11, Provisional 1a; School Year 2009-10, 1a; School Year 2008-09, 1a; School Year 2007-08, 1b., <http://nces.ed.gov/ccd/tables/AFGR0812.asp>

Pew Research Hispanic Center, <http://www.pewhispanic.org/2013/05/09/hispanic-high-school-graduates-pass-whites-in-rate-of-college-enrollment/>



Dropout Rates Decreasing

Dropout rate, 2000-2012

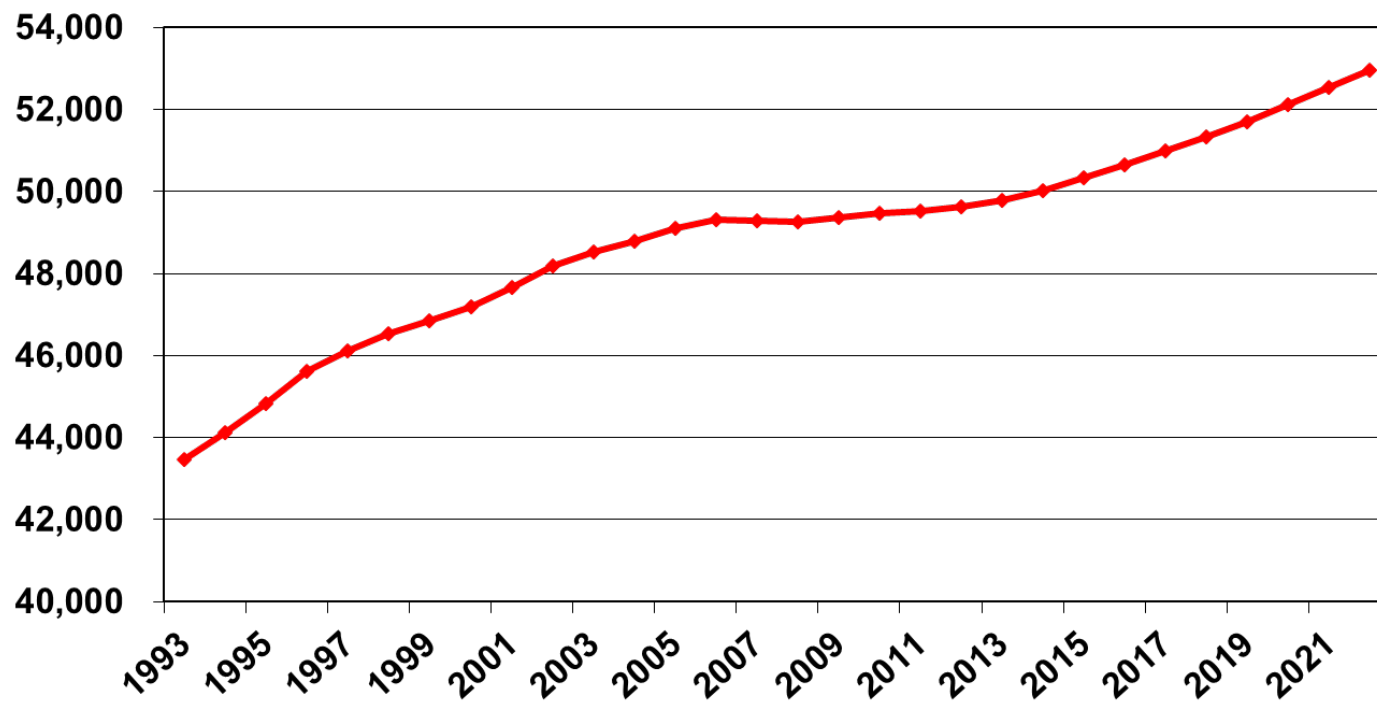


SOURCE: U.S. Department of Education, National Center for Education Statistics. (2013). *The Condition of Education 2013*, Tables 128 and 129, <http://nces.ed.gov/programs/coe/> and *Digest of Education Statistics*, Tables 219.70, 219.71, 219.75, and 219.76.



Rising K-12 Enrollments

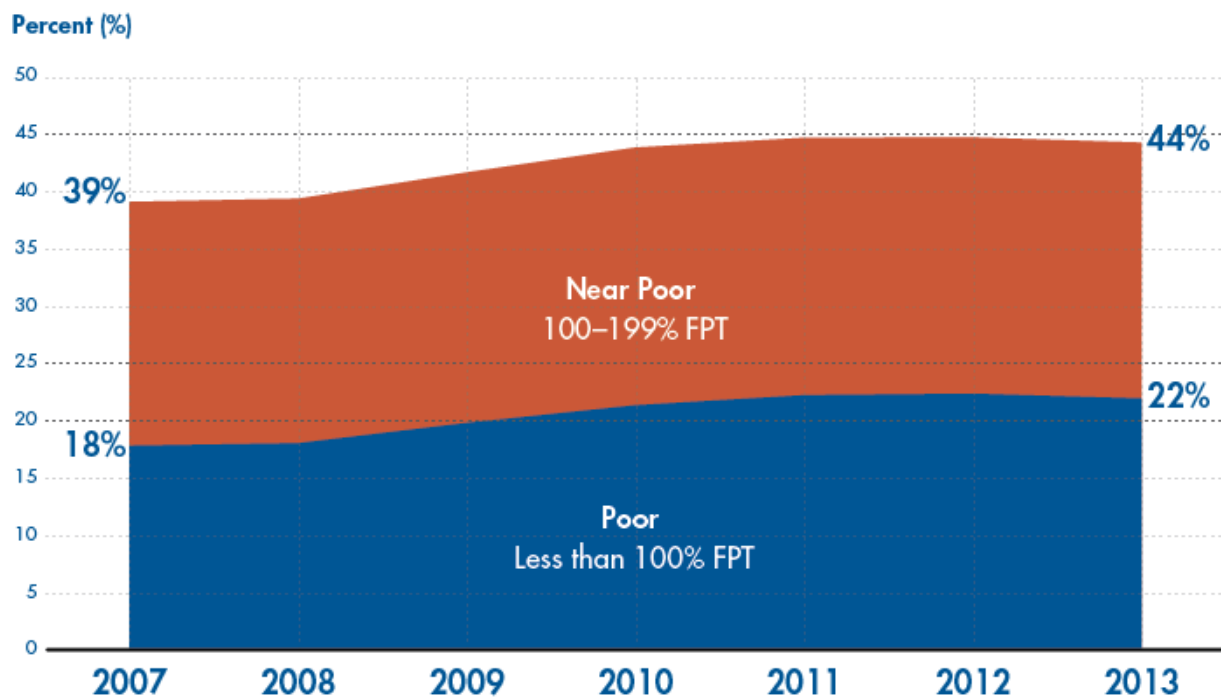
Public school enrollment (in thousands)



Source: CEF based on NCES *Projections of Education Statistics to 2022*

More Children in Poverty

Figure 2: Children living in low-income and poor families, 2007–2013



©National Center for Children in Poverty (www.nccp.org)

Basic Facts about Low-Income Children: Children under 18 Years, 2013

ALICE

ASSET LIMITED, INCOME CONSTRAINED, EMPLOYED



Poverty
Households
1,292



In
Enfield



ALICE
Households
3,392

Connecticut Median Annual Earnings by Gender & Education ~ 2012



\$95,000
\$85,000
\$75,000
\$65,000
\$55,000
\$45,000
\$35,000
\$25,000
\$15,000

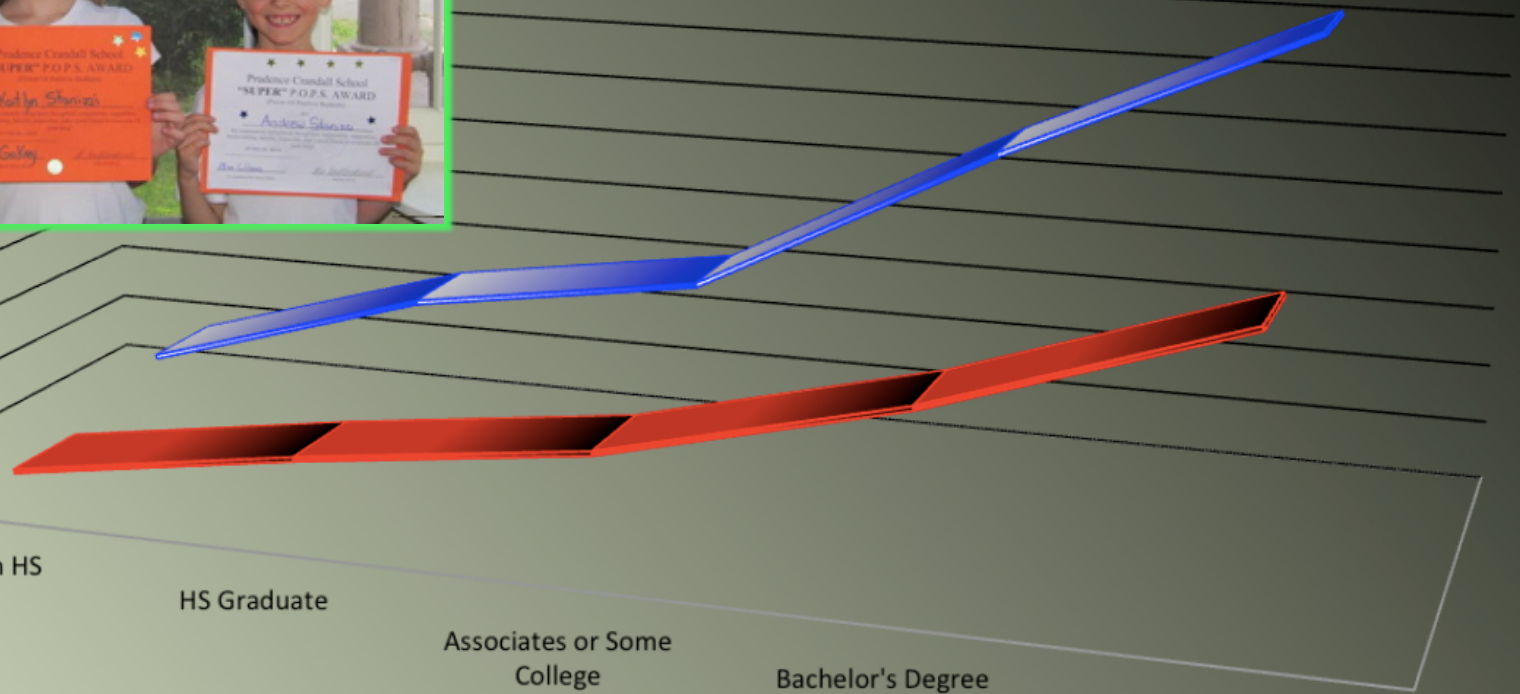
Less than HS

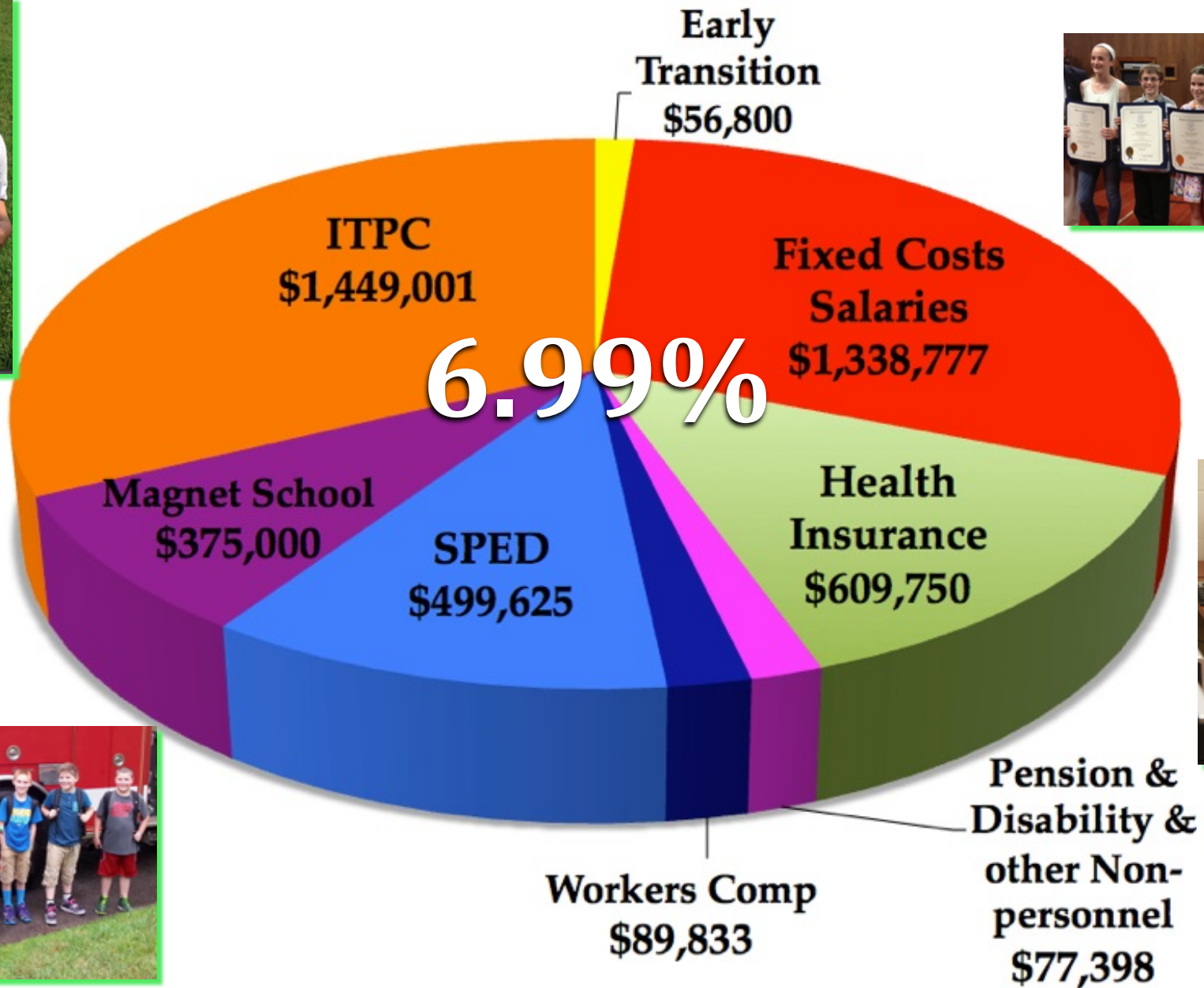
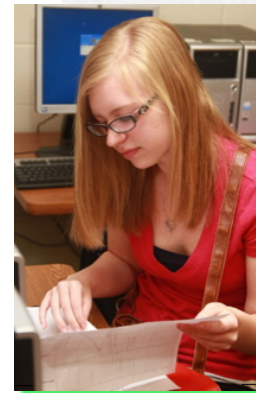
HS Graduate

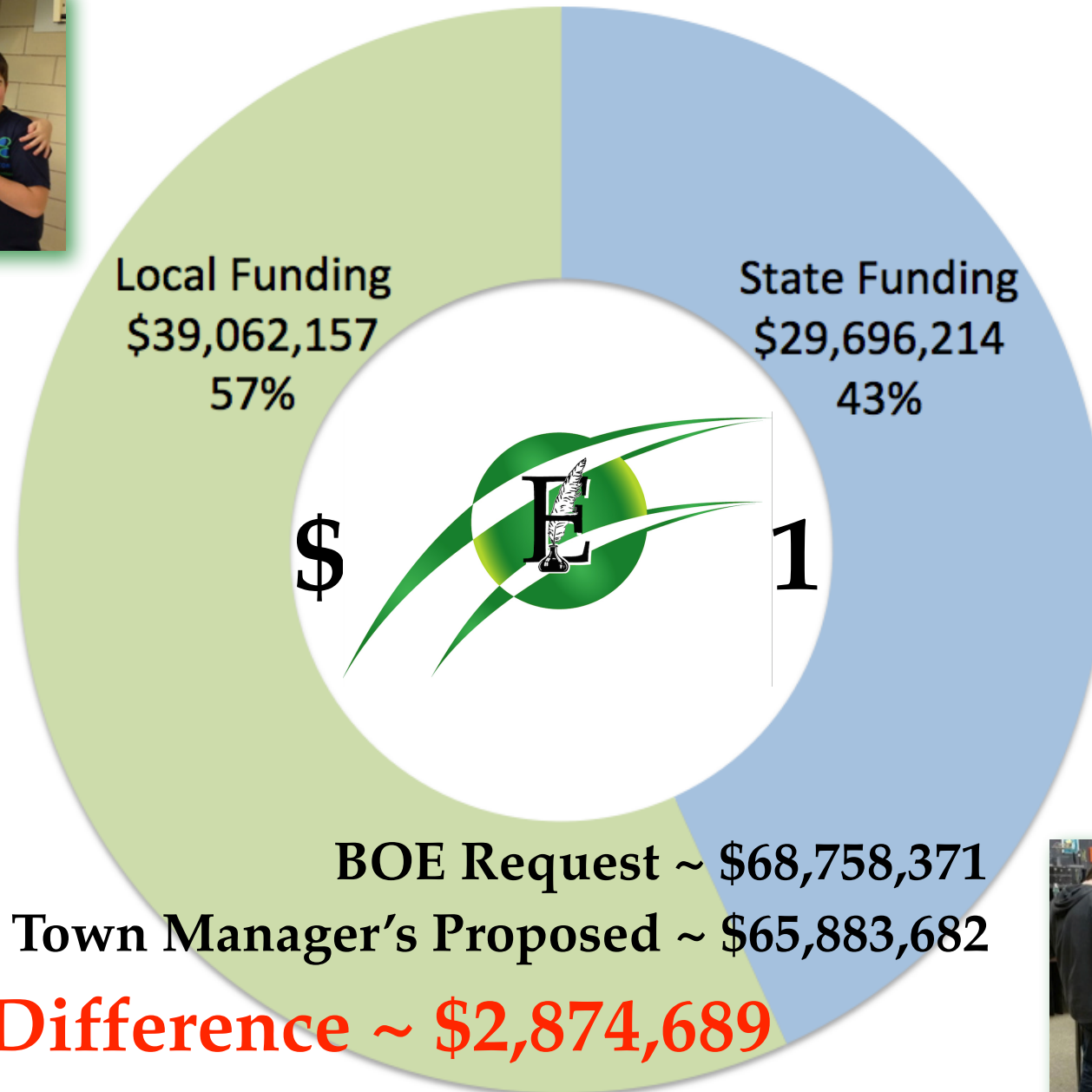
Associates or Some
College

Bachelor's Degree

Graduate or
Professional Degree







Individual differences
Multiple intelligences
Cultural diversity
Curiosity, passion, creativity

Schooling

Employable
skills

It is a miracle that curiosity survives formal education.
---Albert Einstein



Individual differences
Multiple intelligences

Cultural diversity

Curiosity, passion, creativity



Schooling

Enhance Human Talents
**Our students
must be able to
think creatively,
reason
systematically,
work
collaboratively
and engage
respectfully.**